



#### Spare parts order form

## TriTable Triangular table.

### TriTable-I (Students' tables)

Triangular tables with tabletop thickness 25 mm, for model 01430, 01431, 01432

### TriTable-II (Students' tables)

Triangular tables with tabletop thickness 16 mm, for model 01433, 01434, 01435

### TriTable-III (Students' tables)

Triangular tables with tabletop thickness 19 mm, for model 01426, 01427, 01428

### DIN EN 1729 (Students' tables)

h = 400 ○ Size class 0  
h = 520 ● Size class 2  
h = 590 ● Size class 3  
h = 640 ● Size class 4  
h = 710 ● Size class 5  
h = 760 ● Size class 6  
h = 820 ● Size class 7

### Note:

You can see which model your table is by the sticker on the underside of the table top (with order number/ AB number, model number and delivery week/LW)/

**ET0349 19.04**

**Plastic glide element D = 35 mm**

for chipboard table top (16 mm)  
for TriTable-I: 01430, 01431, 01432  
for TriTable-II: 01433, 01434, 01435  
for TriTable-III: 01426, 01427, 01428  
for solid HPL top (13 mm)  
for TriTable-II: 01433, 01434, 01435  
Content: 20 units



**ET0351 44.41**

**Felt glide element D = 35 mm**

for chipboard table top (16 mm)  
for TriTable-I: 01430, 01431, 01432  
for TriTable-II: 01433, 01434, 01435  
for TriTable-III: 01426, 01427, 01428  
for solid HPL top (13 mm)  
for TriTable-II: 01433, 01434, 01435  
Content: 20 units



**ET0350 31.72**

**2-component glide element D = 35 mm**

for chipboard table top (16 mm)  
for TriTable-I: 01430, 01431, 01432  
for TriTable-II: 01433, 01434, 01435  
for TriTable-III: 01426, 01427, 01428  
for solid HPL top (13 mm)  
for TriTable-II: 01433, 01434, 01435  
Content: 20 units



**ET0744 19.04**

**Plastic glide element D = 35 mm**

for solid HPL top (13 mm)  
for TriTable-III: 01426, 01427, 01428  
Content: 20 units



**ET0745 44.41**

**Felt glide element D = 35 mm**

for solid HPL top (13 mm)  
for TriTable-III: 01426, 01427, 01428  
Content: 20 units



**ET0746 31.72**

**2-component glide element D = 35 mm**

for solid HPL top (13 mm)  
for TriTable-III: 01426, 01427, 01428  
Content: 20 units



**ET1075 30.17**

**Castor (ø 65 mm) with plug**

for chipboard table top (16 mm)  
for TriTable-I: 01430, 01431, 01432  
for TriTable-II: 01433, 01434, 01435  
for TriTable-III: 01426, 01427, 01428  
for solid HPL top (13 mm)  
for TriTable-II: 01433, 01434, 01435

Content: 2 castors with and 1 castor without brakes with fixing material



**ET1076 30.17**

**Castor (ø 65 mm) with plug**

for solid HPL top (13 mm)  
for TriTable-III: 01426, 01427, 01428

Content: 2 castors with and 1 castor without brakes with fixing material



**ET0266 36.79**

**Castor (ø 65 mm)**

for TriTable-I: 01430, 01431, 01432  
for TriTable-II: 01433, 01434, 01435  
for TriTable-III: 01426, 01427, 01428

Content: 2 castors with and 1 castor without brakes



**ET0705 19.04**

**Plug with metal internal thread M10**

for Tischplatte aus Spanplatte (16 mm)  
for TriTable-I: 01430, 01431, 01432  
for TriTable-II: 01433, 01434, 01435  
for TriTable-III: 01426, 01427, 01428  
for solid HPL top (13 mm)  
for TriTable-II: 01433, 01434, 01435

Content: 10 units



**ET0701 19.04**

**Plug with metal internal thread M10**

for solid HPL top (13 mm)  
for TriTable-III: 01426, 01427, 01428

Content: 10 units



**ET0933 12.69**

**Stacking buffer**

for TriTable-II: 01433, 01434, 01435  
for TriTable-III: 01426, 01427, 01428

Content: 20 units



**ET0666 36.79**

**Table connector for tube D = 35 mm**

for TriTable-I: 01430, 01431, 01432

Content: 10 units

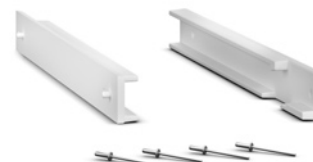


**ET0988 7.68**

**Gratnells guide set for TriTable, white**

for all models with prepared frame

Content: 1 unit (two-part) with fixing material



**ET1020 7.68**

**Gratnells guide set for TriTable, black**

for all models with prepared frame

Content: 1 unit (two-part) with fixing material



**ET0790 11.19**

**Plastic box with integrated pull-out protection (7.5 cm high)**

Generation: from 2021

Colours, see last page



**ET1042 95.13**

**Chipboard table top (25 mm) triangle 80 x 80 cm (90°)**

for model: 01430

with fixing material



**ET1043 101.01**

**Chipboard table top (25 mm) triangle 85 x 85 cm (90°)**

for model: 01431

with fixing material



**ET1044 106.88**

**Chipboard table top (25 mm) triangle 90 x 90 cm (90°)**

for model: 01432

with fixing material



**ET1045 95.13**

**Chipboard table top (16 mm) triangle 80 x 80 cm (90°)**

for model: 01433

with fixing material



---

**ET1046** **101.01**

**Chipboard table top (16 mm) triangle 85 x 85 cm (90°)**

for model: 01434  
with fixing material



---

**ET1047** **106.88**

**Chipboard table top (16 mm) triangle 90 x 90 cm (90°)**

for model: 01435  
with fixing material



---

**ET1039** **95.13**

**Chipboard table top (19 mm) triangle 80 x 80 cm (90°)**

for model: 01426  
with fixing material



---

**ET1040** **101.01**

**Chipboard table top (19 mm) triangle 85 x 85 cm (90°)**

for model: 01427  
with fixing material



---

**ET1041** **106.88**

**Chipboard table top (19 mm) triangle 90 x 90 cm (90°)**

for model: 01428  
with fixing material



## Chipboard/MDF/HPL



**027** natural beech laminate



**028** natural maple laminate



**029** natural walnut laminate



**031** grey white (RAL 9002)



**035** andes grey (RAL 7035)



**328** white



**340** natural oak laminate



**415** terra grey (NCS S 4005-Y50R)

## Metal surfaces/Gratnells



**015, 025** anthracite



**016, 026** translucent



**030, 040** dark red (NCS S 2570-R)



**031, 041** dark bl. (NCS S 6030-R80B)



**032, 042** light bl. (NCS S 1040-R90B)



**033, 043** light gr. (NCS S 1070-G60Y)



**038, 048** turquoise (RAL 210 40 20)



**039, 049** broom yellow (RAL 1032)



**011, 021** traffic red (RAL 3020)