



ORDER FORM FOR SPARE PARTS 45-076-38 V06 - 25.01.2024 - www.vs-moebel.de

Uno-C.

Uno-C (Students' desk, Students' one-seater desk)
22430, 22431

Uno-C (Students' desk, Students' two-seater desk)
22432, 22433

Skid desk with tubular steel C-shaped frame and desktop made from solid HPL panel (13 mm), LIGNOdur (16 mm) or chipboard (19 mm). Chipboard with plastic edge or moulded PUR edge.

DIN EN 1729 (Students' desks)

h = 520 ● Size class 2	h = 710 ● Size class 5
h = 590 ● Size class 3	h = 760 ● Size class 6
h = 640 ● Size class 4	h = 820 ● Size class 7

Note:

To identify your model, please note the sticker with order (AB), model number and week of delivery (LW) on the underside of the desktop.

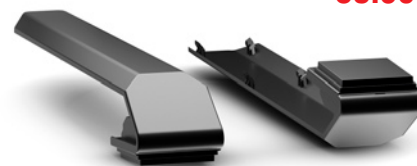
ET0640

Flat plastic glide element with kick protection (rear)

for chipboard desktop (19 mm)

for Students' desk: 22430, 22431, 22432, 22433

Contents: 10 units for 5 desks



53.90

ET0641

High plastic glide element with kick protection (rear)

for desktop made from LIGNOdur (16 mm) or solid HPL panel (13 mm)

for Students' desk: 22430, 22431, 22432, 22433

Contents: 10 units for 5 desks



53.90

ET0642

Flat plastic glide element (front)

for chipboard desktop (19 mm)

for Students' desk: 22430, 22431, 22432, 22433

Contents: 10 units for 5 desks



48.11

ET0643

High plastic glide element (front)

for desktop made from LIGNOdur (16 mm) or solid HPL panel (13 mm)

for Students' desk: 22430, 22431, 22432, 22433

Contents: 10 units for 5 desks



48.11

ET0644

Flat plastic glide element with castor (front)

for chipboard desktop (19 mm)

for Students' desk: 22430, 22431, 22432, 22433

Contents: 10 units for 5 desks



59.70

ET0645

High plastic glide element with castor (front)

for desktop made from LIGNOdur (16 mm) or solid HPL panel (13 mm)

for Students' desk: 22430, 22431, 22432, 22433

Contents: 10 units for 5 desks



59.70

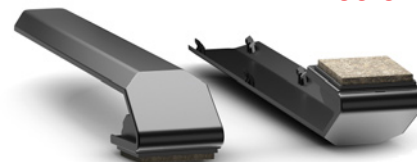
ET0646

Flat felt glide element, kick protection (rear)

for chipboard desktop (19 mm)

for Students' desk: 22430, 22431, 22432, 22433

Contents: 10 units for 5 desks



66.64

ET0647

High felt glide element with kick protection (rear)

for desktop made from LIGNOdur (16 mm) or solid HPL panel (13 mm)

for Students' desk: 22430, 22431, 22432, 22433

Contents: 10 units for 5 desks



66.64

ET0648

Flat felt glide element (front)

for chipboard desktop (19 mm)

for Students' desk: 22430, 22431, 22432, 22433

Contents: 10 units for 5 desks

62.00



ET0649

High felt glide element (front)

for desktop made from LIGNOdur (16 mm) or solid HPL panel (13 mm)

for Students' desk: 22430, 22431, 22432, 22433

Contents: 10 units for 5 desks

62.00



ET0650

Flat felt glide element with castor (front)

for chipboard desktop (19 mm)

for Students' desk: 22430, 22431, 22432, 22433

Contents: 10 units for 5 desks

71.28



ET0651

High felt glide element with castor (front)

for desktop made from LIGNOdur (16 mm) or solid HPL panel (13 mm)

for Students' desk: 22430, 22431, 22432, 22433

Contents: 10 units for 5 desks

71.28



ET0652

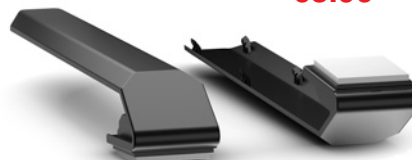
Flat dual-component glide element with kick protection (rear)

for chipboard desktop (19 mm)

for Students' desk: 22430, 22431, 22432, 22433

Contents: 10 units for 5 desks

68.96



ET0653

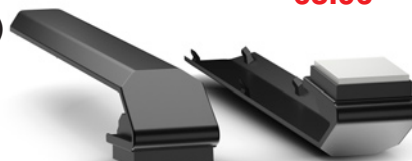
High dual-component glide element with kick protection (rear)

for desktop made from LIGNOdur (16 mm) or solid HPL panel (13 mm)

for Students' desk: 22430 22431 22432 22433

Contents: 10 units for 5 desks

68.96



ET0654

Flat dual-component glide element (front)

for chipboard desktop (19 mm)

for Students' desk: 22430, 22431, 22432, 22433

Contents: 10 units for 5 desks

63.17



ET0655

High dual-component glide element (front)

for desktop made from LIGNOdur (16 mm) or solid HPL panel (13 mm)

for Students' desk: 22430, 22431, 22432, 22433

Contents: 10 units for 5 desks

63.17



ET0656

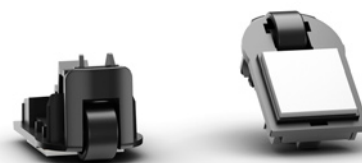
Flat dual-component glide element with castor (front)

for chipboard desktop (19 mm)

for students' desk: 22430, 22431, 22432, 22433

Contents: 10 units for 5 desks

74.76



ET0657

High dual-component glide element with castor (front)

for desktop made from LIGNOdur (16 mm) or solid HPL panel (13 mm)

for Students' desk: 22430, 22431, 22432, 22433

Contents: 10 units for 5 desks

74.76



ET0659

Flat plastic insert for glide element (front/rear)

for chipboard desktop (19 mm)

for Students' desk: 22430, 22431, 22432, 22433

Contents: 10 units (4 units per desk)

12.41



ET0660

Flat felt insert for glide element (front/rear)

for chipboard desktop (19 mm)

for Students' desk: 22430, 22431, 22432, 22433

Contents: 10 units (4 units per desk)

33.50



ET0661

Flat dual-component insert for glide element (front/rear)

for chipboard desktop (19 mm)

for Students' desk: 22430, 22431, 22432, 22433

Contents: 10 units (4 units per desk)

37.32



ET0662

High plastic insert for glide element (front/rear)

for desktop made from LIGNOdur (16 mm) or solid HPL panel (13 mm)

for Students' desk: 22430, 22431, 22432, 22433

Contents: 10 units (4 units per desk)

12.41



ET0663

High felt insert for glide element (front/rear)

for desktop made from LIGNOdur (16 mm) or solid HPL panel (13 mm)

for Students' desk: 22430, 22431, 22432, 22433

Contents: 10 units (4 units per desk)

33.50



ET0664

High dual-component insert for glide element (front/rear)

for desktop made from LIGNOdur (16 mm) or solid HPL panel (13 mm)

for Students' desk: 22430, 22431, 22432, 22433

Contents: 10 units (4 units per desk)

37.32



ET0716-16LDUR

LIGNOdur desktop (16 mm) WxD 70 x 50 cm

for Students' desk: 22430

Contents: 1 units

Materials/finishes, see Annex

Important: separate freight and quantity condition no. 2, see introduction

74.77



ET0716-19SPAN

Chipboard desktop (19 mm) WxD 70 x 50 cm

for Students' desk: 22430

Contents: 1 units

Materials/finishes, see Annex

Important: separate freight and quantity condition no. 2, see introduction

56.08



ET0716-19SPAN-PUR

Chipboard desktop (19 mm) with PUR edge WxD 70 x 50 cm

for Students' desk: 22430

Contents: 1 units

Materials/finishes, see Annex

Important: separate freight and quantity condition no. 2, see introduction

68.54



ET0717-16LDUR

LIGNOdur desktop (16 mm) WxD 75 x 65 cm

for Students' desk: 22431

Contents: 1 units

Materials/finishes, see Annex

Important: separate freight and quantity condition no. 1, see introduction

80.99



ET0717-19SPAN

Chipboard desktop (19 mm) WxD 75 x 65 cm

for Students' desk: 22431

Contents: 1 units

Materials/finishes, see Annex

Important: separate freight and quantity condition no. 1, see introduction

62.30



ET0717-19SPAN-PUR

Chipboard desktop (19 mm) with PUR edge WxD 75 x 65 cm

for Students' desk: 22431

Contents: 1 units

Materials/finishes, see Annex

Important: separate freight and quantity condition no. 1, see introduction

74.76



ET0718-16LDUR

LIGNOdur desktop (16 mm) WxD 130 x 50 cm

for Students' desk: 22432

Contents: 1 units

Materials/finishes, see Annex

Important: separate freight and quantity condition no. 1, see introduction

93.46



ET0718-19SPAN

Chipboard desktop (19 mm) WxD 130 x 50 cm

for Students' desk: 22432

Contents: 1 units

Materials/finishes, see Annex

Important: separate freight and quantity condition no. 1, see introduction

68.54



ET0718-19SPAN-PUR

Chipboard desktop (19 mm) with PUR edge WxD 130 x 50 cm

for Students' desk: 22432

Contents: 1 units

Materials/finishes, see Annex

Important: separate freight and quantity condition no. 1, see introduction

87.23



ET0719-19SPAN

Chipboard desktop (19 mm) WxD 130 x 65 cm

for Students' desk: 22433

Contents: 1 units

Materials/finishes, see Annex

Important: separate freight and quantity condition no. 1, see introduction

99.68



ET0719-19SPAN-PUR

Chipboard desktop (19 mm) with PUR edge WxD 130 x 65 cm

for Students' desk: 22433

Contents: 1 units

Materials/finishes, see Annex

Important: separate freight and quantity condition no. 1, see introduction

118.37



ET0686

Fixing set for solid HPL desktop (13 mm)

for Students' one-seater desk: 22430, 22431 (6 screws per top)

for Students' two-seater desk: 22432, 22433 (6 screws per top, additionally 1 screw for desktop support)

Contents: 60 screws for 10 desks

7.48



ET0686

Fixing set for LIGNOdur desktop (16 mm)

for Students' one-seater desk: 22430, 22431 (6 screws per top, additionally 1 screw for desktop support)

for Students' two-seater desk: 22432, 22433 (6 screws per top, additionally 1 screw for desktop support)

Contents: 60 screws for 10 desks

7.48



ET0687

Fixing set for chipboard desktop (19 mm)

for Students' one-seater desk: 22430, 22431 (6 screws per top)

for Students' two-seater desk: 22432, 22433 (6 screws per top, additionally 1 screw for desktop support)

Contents: 60 screws for 10 desks

7.48



ET0658

Plastic desktop support (black)

without fixing material

for Students' one-seater desk: 22430, 22431 (if desktop made from LIGNOdur (16 mm))

for Students' two-seater desk: 22432, 22433

Contents: 5 units for 5 desks

7.85



ET0583

Chair suspension grille

with fixing material for prepared chipboard desktop (19 mm)

for Students' desk: 22430, 22431, 22432, 22433

for Students' chairs of all sizes: JUMPER Air/Ply Move, JUMPER Air/Ply Active, JUMPER Air/Ply Four, PantoMove-LuPo/-VF, PantoSwing-LuPo/-VF, Compass-LuPo/-VF, NF-Move, NF-Compass, NF-Swing

Contents: 1 set, with fixing material

33.02



ET0033

Storage basket set (each 453 x 220 x 92 mm)

for prepared chipboard (19 mm) or LIGNOdur desktop (16 mm)

including fixing material

IMPORTANT: pay attention to the correct screw length during assembly!

Contents: 2 units for 1 two-seater or 2 one-seaters, with fixing material

25.52



ET0670

Satchel hook set

for all Uno-C models, including fixing material

for Students' desk: 22430, 22431, 22432, 22433

Contents: 4 units for 2 two-seaters or 4 one-seaters

19.89



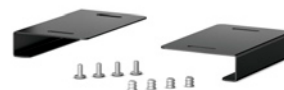
ET0450

PantoMove-LuPo suspension rail for chipboard desktop (19 mm)

for all models with pre-drilled chipboard desktop

Contents: 1 piece (two-part), with fixing material

23.68



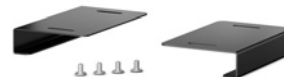
ET0796

Chair suspension rail set for one PantoMove-LuPo (16 mm)

for all models with pre-drilled LIGNOdur desktop

Contents: 1 piece (two-part), with fixing material

23.68



ET0848

Universal suspension rail for chipboard desktop (19 mm)

for all models with pre-drilled chipboard desktop

for Students' chairs of all sizes: LuPoGlide, LuPoGlide-Comfort, BasicGlide, BasicGlide-Comfort, LuPoTurn, LuPoTurn-XL, BasicTurn, BasicTurn-XL, JUMPER Air Move, PantoMove-LuPo, NF-Move

Content: 1 piece (two-part), with fixing material

23.68



ET0797

Universal suspension rail for LIGNOdur desktop (16 mm)

for all models with pre-drilled LIGNOdur desktop

for Students' chairs of all sizes: LuPoGlide, LuPoGlide-Comfort, BasicGlide, BasicGlide-Comfort, LuPoTurn, LuPoTurn-XL, BasicTurn, BasicTurn-XL, JUMPER Air Move, PantoMove-LuPo, NF-Move

Content: 1 piece (two-part), with fixing material

23.68



ET0722

Gratnell box guide rail set for Uno-C

for all models with pre-drilled chipboard/LIGNOdur desktop

Content: 1 piece (two-part), with fixing material

21.19



ET0790

Plastic box with integrated pull-out protection (7.5 cm high)

Generation: from 2021

Colours, see last page

10.99



ET0789

Plastic box with integrated pull-out protection (15 cm high)

Generation: from 2021

Colours, see last page

14.29



Plastic colour:
Gratnells

Desktop surfaces:
LIGNOdur

Chipboard-PUR



015, 025 anthracite



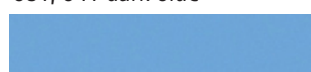
016, 026 translucent



030, 040 dark red (NCS S 2570-R)



031, 041 dark blue (NCS S 6030-R80B)



032, 042 light blue (NCS S 1040-R90B)



033, 043 light green (NCS S 1070-G60Y)



001, 011, 021 red (RAL 3020)



027 natural beech laminate



028 natural maple laminate



031 grey white (RAL 9002)



035 andes grey (RAL 7035)



027 natural beech laminate



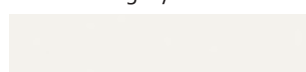
028 natural maple laminate



031 grey white (RAL 9002)



035 andes grey (RAL 7035)



328 white