



ORDER FORM FOR SPARE PARTS 45-079-12 V05 - 25.01.2024 - www.vs-moebel.de

RondoLift-KF with 4- or 5-spoke star foot

RondoLift-KF (square top, 4-spoke star foot)

02820 WxD 80 x 80 cm
02821 WxD 90 x 90 cm
02822 WxD 100 x 100 cm

RondoLift-KF (round top, 5-spoke star foot)

02823 ø 80 cm
02824 ø 90 cm
02825 ø 100 cm
02826 ø 110 cm
02827 ø 120 cm

RondoLift-KF (elliptical top, 4-spoke star foot)

02828 WxD 130 x 80 cm

RondoLift-KF (barrel-shaped top, 4-spoke star foot)

02829 WxD 120 x 84 cm

Sitting and stand-at table in one:

The RondoLift-KF offers continuous height-adjustment over so great a range that it can be used as both a sitting and stand-at table. The hand-operated switch has a protective cover to prevent unintentional activation of the gas-spring height-adjustment mechanism. The table can be optionally equipped with castors, allowing it to be moved around the room without difficulty. Elliptical, circular and square table tops are available. The oval tables can also be optionally supplied with a lockable drawer under the table top. Round and square tables (as of 90 cm) can also be equipped with a folding, locking table top for secure transport.

Note:

You can find out the model of your table by looking at the label on the bottom of the table top with order (AB), model number and week of delivery (LW).

ET0214

Adjustable foot with plastic glide element

for all RondoLift-KF units with 5-spoke star foot

Tubular attachment to convert from castors to glide elements

Model 02823, 02824, 02825, 02826, 02827

Contents: 5 units, sufficient for one table; **metal colours, see last page**



68.54

ET0215

Adjustable foot with felt glide element

for RondoLift-KF units with 5-spoke star foot

Tubular attachment to convert from castors to glide elements

Model 02823, 02824, 02825, 02826, 02827

Contents: 5 units, sufficient for one table; **metal colours, see last page**



74.76

ET1018

Adjustable foot with plastic glide element

for RondoLift-KF units with 4-spoke star foot

Tubular attachment to convert from castors to glide elements

Model 02820, 02821, 02822, 02828, 02829

Contents: 4 units, sufficient for one table; **metal colours, see last page**



62.30

ET1019

Adjustable foot with felt glide element

for RondoLift-KF units with 4-spoke star foot

Tubular attachment to convert from castors to glide elements

Model 02820, 02821, 02822, 02828, 02829

Contents: 4 units, sufficient for one table; **metal colours, see last page**



68.96

ET0841

Adjusting screw (M10 x 15.5) with plastic glide element

for all RondoLift-KF units with adjustable foot

Contents: 20 units



24.93

ET0842

Adjusting screw (M10 x 15.5) with felt glide element

for all RondoLift-KF units with adjustable foot

Contents: 20 units



31.16

ET0216

Castor (ø75 mm) with lock, set of 5

for RondoLift-KF units with 5-spoke star foot (round tables)

Model 02823, 02824, 02825, 02826, 02827

Contents: 5 units, sufficient for one table



68.54

ET0437

Castor (ø75 mm) with lock, set of 4

for RondoLift-KF units with 4-spoke star foot

Model 02820, 02821, 02822, 02828, 02829

Contents: 4 units, sufficient for one table



55.08

ET0934

Plug for star foot stabiliser (rectangular tube)

for all RondoLift-KF units

Contents: 5 units, sufficient for one table

Inhalt: 5 Stück, passend für einen Tisch



12.47

ET0665

Drawer with plastic front part

with lock LE 18001

for model 02829

Contents: 1 unit, with fixing material

235.48



ET0981

Drawer with decorative front part

with metal bow handle and lock (please specify the corresponding key numbers)

for model 02828

Contents: 1 unit, with fixing material

Materials/finishes, see Annex

167.20



ET0982

Decorative front part for drawers (from September 2015)

with metal bow handle and lock (please specify the corresponding key numbers)

for model 02828

Contents: 1 unit, with fixing material

Materials/finishes, see Annex

59.89



ET0247

Front fixing (W=85 mm) for drawers (until Aug. 2015)

for model 02828

Contents: 1 pair, sufficient for one drawer

11.22



75-749-65

Materials tray for drawers (until Aug. 2015)

for model 02828

Contents: 1 unit

13.64



ET0397

Cylindrical lever lock with inner cylinder and set of keys

for model 02828 (please specify the corresponding key numbers)

with locking system 18001-18500 (1x fixed, 1x flip)

with locking system 4001-4099 (2x fixed)

Contents: 1 unit, with fixing material

25.52



ET0282-K

Plastic bow handle (W=128 mm)

dark-grey, light-grey or Nevada beige

for model 02828

Contents: 1 unit, with fixing material

6.76



ET0282-M

Metal bow handle (W=128 mm)

chrome- or nickel-plated

for model 02828

Contents: 1 unit, with fixing material

11.18



ET0315

Hand-operated switch with Bowden wire for top WxD 80 x 80 cm

for model 02820 with square table top

Contents: 1 unit, with fixing material



59.81

ET0316

Hand-operated switch with Bowden wire for top WxD 90 x 90 cm

for model 02821 with square table top

Contents: 1 unit, with fixing material



59.81

ET0317

Hand-operated switch with Bowden wire for top WxD 100 x 100 cm

for model 02822 with square table top

Contents: 1 unit, with fixing material



59.81

ET0318

Hand-operated switch with Bowden wire for top ø 80 cm

for model 02823 with round table top

Contents: 1 unit, with fixing material



59.81

ET0319

Hand-operated switch with Bowden wire for top ø 90 cm

for model 02824 with round table top

Contents: 1 unit, with fixing material



59.81

ET0320

Hand-operated switch with Bowden wire for top ø 100 cm

for model 02825 with round table top

Contents: 1 unit, with fixing material



59.81

ET0321

Hand-operated switch with Bowden wire for top ø 110 cm

for model 02826 with round table top

Contents: 1 unit, with fixing material



59.81

ET0322

Hand-operated switch with Bowden wire for top ø 120 cm

for model 02827 with round table top

Contents: 1 unit, with fixing material



59.81

ET0540

Hand-operated switch with Bowden wire for top WxD 130 x 80 cm

for model 02828 with elliptical table top

Contents: 1 unit, with fixing material

59.81



ET0324

Hand-operated switch with Bowden wire for top WxD 120 x 84 cm

for model 02829 with barrel-shaped table top

Contents: 1 unit, with fixing material

59.81



ET0213

Protection for hand-operated switch

for all RondoLift-KF units

Contents: 1 units

11.22



ET0470

Gas spring

for model 02820, 02821, 02822, 02825, 02826, 02827

Contents: 1 unit, with fixing material, without hand-operated switch and Bowden wire

380.00



ET0623

Gas spring

for model 02823, 02824

Contents: 1 unit, with fixing material, without hand-operated switch and Bowden wire

367.54



ET0573

Gas spring

for model 02828

Contents: 1 unit, with fixing material, without hand-operated switch and Bowden wire

380.00



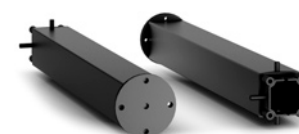
ET0469

Gas spring

for model 02829

Contents: 1 unit, with fixing material, without hand-operated switch and Bowden wire

479.67



ET0811

Chipboard table top (25 mm) WxD 80 x 80 cm

with 2.5 mm plastic edge and 2.5 mm corner radius

for model 02820

Contents: 1 unit, with fixing material (table top thickness 19 mm, minus -5.79)

Materials/finishes, see last page

87.22



ET0812

Chipboard table top (25 mm) WxD 90 x 90 cm

with 2.5 mm plastic edge and 2.5 mm corner radius

for model 02821 with fixed or folding top (5.11 extra)

Contents: 1 unit, with fixing material (table top thickness 19 mm, minus -5.79)

Materials/finishes, see last page

99.68



ET0813

Chipboard table top (25 mm) WxD 100 x 100 cm

with 2.5 mm plastic edge and 2.5 mm corner radius

for model 02822 with fixed or folding top (5.11 extra)

Contents: 1 unit, with fixing material (table top thickness 19 mm, minus -5.79)

Materials/finishes, see last page

112.13



ET0814

Chipboard table top (25 mm) ø 80 cm

with 2.5 mm plastic edge

for model 02823

Contents: 1 unit, with fixing material (table top thickness 19 mm, minus -5.79)

Materials/finishes, see last page

124.59



ET0815

Chipboard table top (25 mm) ø 90 cm

with 2.5 mm plastic edge

for model 02824 with fixed or folding top (5.11 extra)

Contents: 1 unit, with fixing material (table top thickness 19 mm, minus -5.79)

Materials/finishes, see last page

137.05



ET0816

Chipboard table top (25 mm) ø 100 cm

with 2.5 mm plastic edge

for model 02825 with fixed or folding top (5.11 extra)

Contents: 1 unit, with fixing material (table top thickness 19 mm, minus -5.79)

Materials/finishes, see last page

149.51



ET0817

Chipboard table top (25 mm) ø 110 cm

with 2.5 mm plastic edge

for model 02826 with fixed or folding top (5.11 extra)

Contents: 1 unit, with fixing material (table top thickness 19 mm, minus -5.79)

Materials/finishes, see last page

161.97



ET0818

Chipboard table top (25 mm) ø 120 cm

with 2.5 mm plastic edge

for model 02827 with fixed or folding top (5.11 extra)

Contents: 1 unit, with fixing material (table top thickness 19 mm, minus -5.79)

Materials/finishes, see last page

174.42



ET0819

161.97

Chipboard table top (25 mm) elliptical WxD 130 x 80 cm

for model 02828 prepared for drawer (5.11 extra)

Contents: 1 unit, with fixing material (table top thickness 19 mm, minus -5.79)

Materials/finishes, see last page



ET0820

161.97

Chipboard table top (25 mm) barrel-shaped WxD 120 x 84 cm

with 2.5 mm plastic edge and 25 mm corner radius

for model 02829 prepared for drawer (5.11 extra)

Contents: 1 unit, with fixing material (table top thickness 19 mm, minus -5.79)

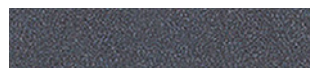
Materials/finishes, see last page



Board surfaces:
**Chipboard with
 glued plastic-edge**



017 astral silver



018 anthracite



019 plain black (NCS S 9000-N)



027 natural beech laminate



028 natural maple laminate



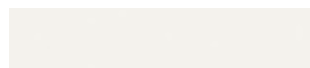
029 natural walnut laminate



031 grey white (RAL 9002)



035 andes grey (RAL 7035)



328 white

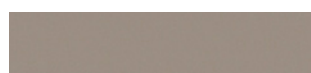


340 natural oak laminate

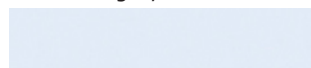


415 terra grey (NCS S 4005-Y50R)

Metal surfaces:



030 terra grey (NCS S 4005-Y50R)



032 light blue (NCS S 0515-R80B)



033 light green (NCS S 1060-G70Y)



041 turquoise (RAL 210 40 20)



045 broom yellow (RAL 1032)



059, 159 arctic



063 anthracite



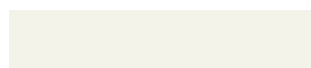
065 black (NCS S 8505-G20Y)



071 sapphire blue (RAL 5003)



084 oxblood (NCS S 3650-R)



091 white (RAL 9016)